



Goliath
2000 - TYPE C

the
new era
ball-burnisher
to care for
all metals
e.g.

- * Sterling silver
- * gold/silver-plated
- * copper & brass
- * bronze
- * aluminium
- * stainless steel
- * chromium-plated

moreillon

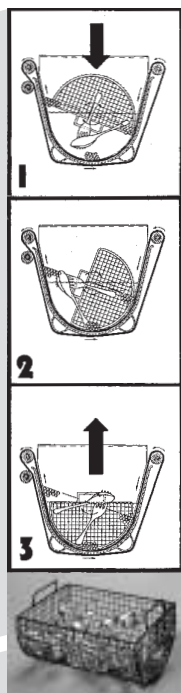
Moreillon Gastrotechnik Pte Ltd
Fidlerstrasse 10 – CH-8272 Ermatingen/SWITZERLAND
Tel. +41 (0)71/664 12 64 - Fax +41 (0)71/664 12 32

E-Mail: moreillon.gastro@bluewin.ch





Swiss made



Pat. pend.

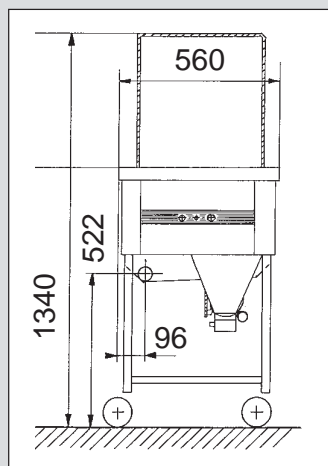
Goliath

2000 - TYPE C

moreillon

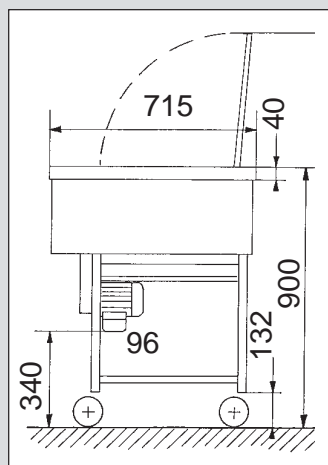
The Ball Burnishing Machine of the Luxury Class

Goliath 2000 Type C is the result of over 50 years experience in the construction of ball burnishing equipment, combined with the latest technical developments regarding operating comfort and ease of maintenance. Thanks to the burnisher's narrow construction (56 cm wide!) it can be easily rolled from room to room and will find space in any type of kitchen. The operating panel is recessed with the control switches at a convenient angle. The polishing trough is newly equipped with an over-flow flap to simplify rinsing and cleaning the polishing balls, and the large-diameter drainage tap means a faster change of the soapy-water.



Front view (in mm)

Modifications
reserved



Side view (in mm)

For the periodical cleaning of the outer tank without the polishing balls having to be removed the entire top cover of the machine can be lifted off by hand. This also provides direct access to the drive mechanism and electric controls. For safety reasons, there is a micro-switch under the cover which instantly switches the machine off as soon as the top is lifted. The vee-belt power transmission is reliable, economical and requires no maintenance (no gears = no lubricating necessary!).

Goliath 2000 Type C is equipped with a sorting basket to lift cutlery or other small items out of the polishing media in one easy operation leaving the burnisher ready for reloading within seconds. The operator has a choice of two band speeds. The standard band speed is intended for general polishing, whereas the slower speed is recommended for the positioning of the sorting basket or for polishing voluminous items such as wine chillers or oval platters up to Ø 30x42 cm.

Technical details:

Drive:	endless conveyor belt
Belt speed:	40 cm/sec. or 20 cm/sec.
Polishing trough:	Ø 31 x 43 cm
Chassis:	Stainless steel, mobile with wheel-stoppers
Casing:	Stainless steel (matt)
Controls:	Combi-switch for 30 minutes or non-stop 2-speed switch
Electrical data:	3x 400/415 V ~ 330 W 50 or 60 cycles PPPNE 3,0 A – flex approx. 13 ft./400 cm (other voltages on request)
Drainage tap:	Ø 1" (NW 25 mm)
Standard accessories:	70 kg *carbon steel balls Ø 3/16" hardened *(on request inox AISI 420 at an extra charge) 1 compartmenting device 5 knife polishing devices with holder 1 sorting basket for cutlery
Weight:	approx. 83 kg machine + 70 kg polishing balls
Guarantee:	1 year against any manufacturing faults